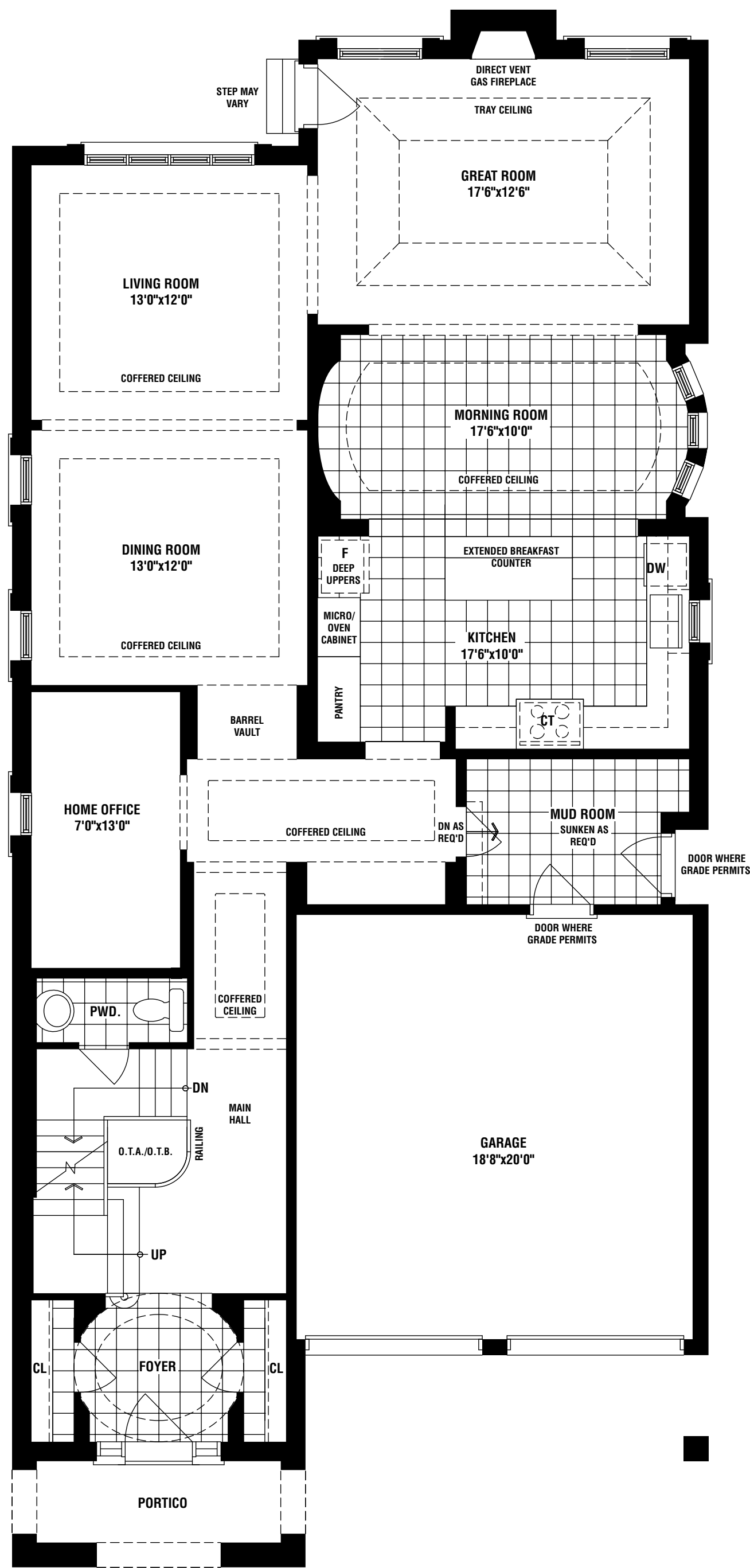


BRISTOL

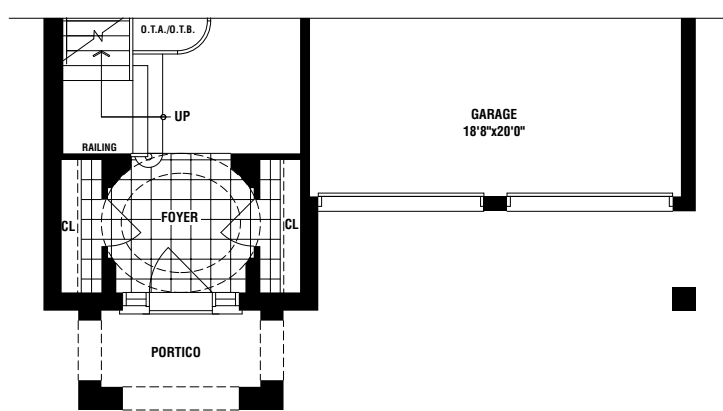
5487 / 5413 / 5487 SQ. FT.

ELEV. A ELEV. B ELEV. C

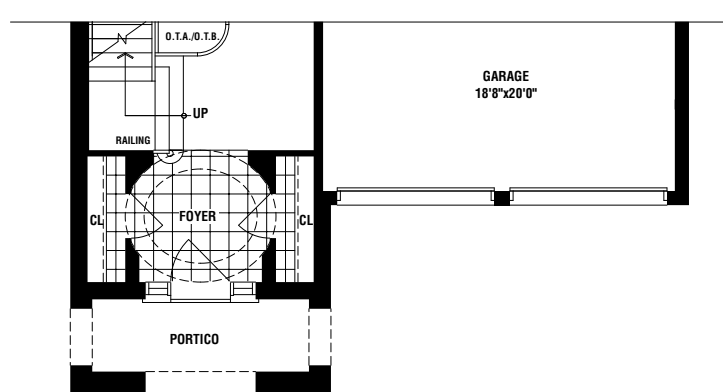
INCLUDES 1129 SQ. FT. OF FINISHED AREA IN BASEMENT



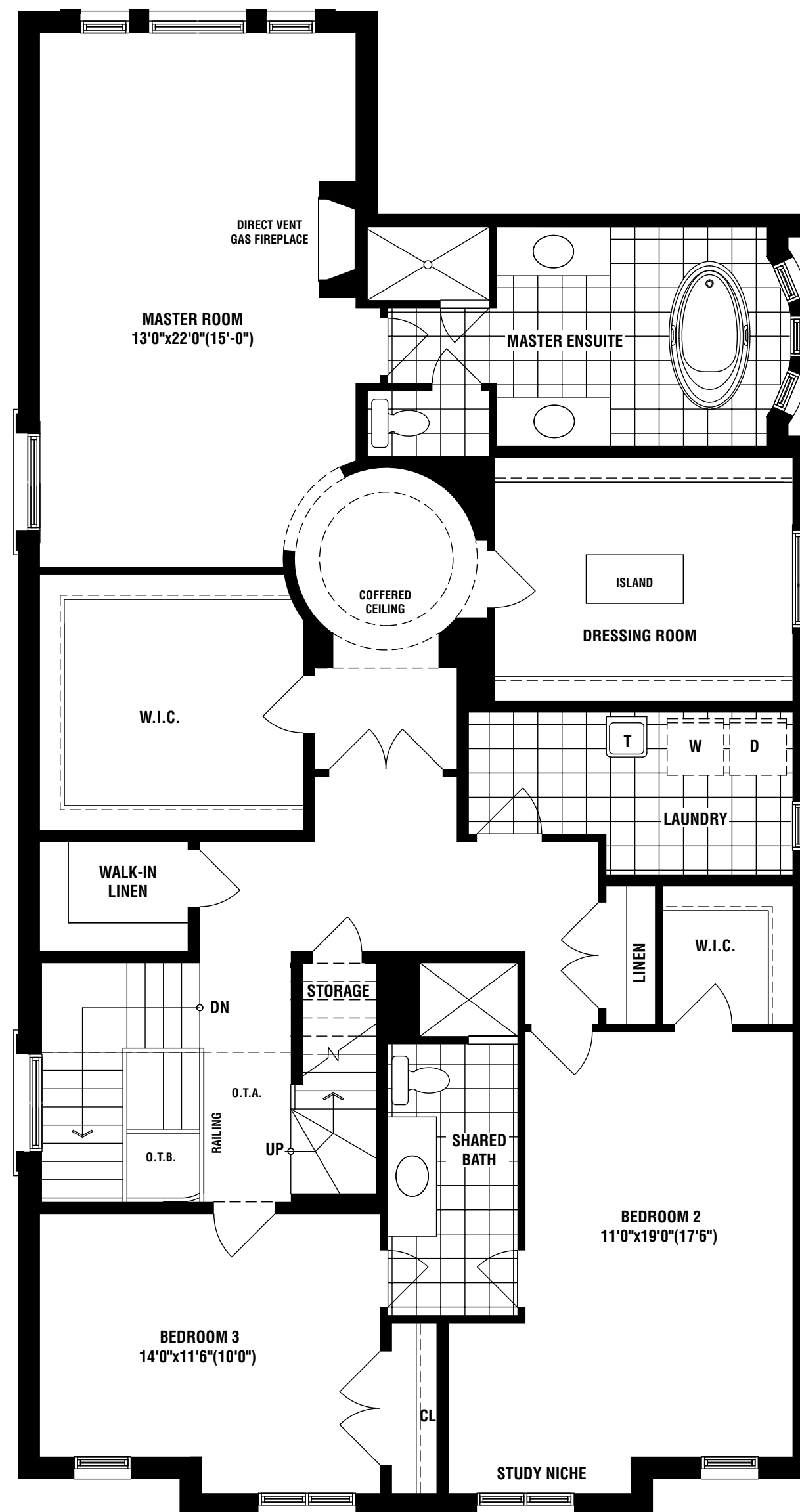
GROUND FLOOR
ELEV. 'A'



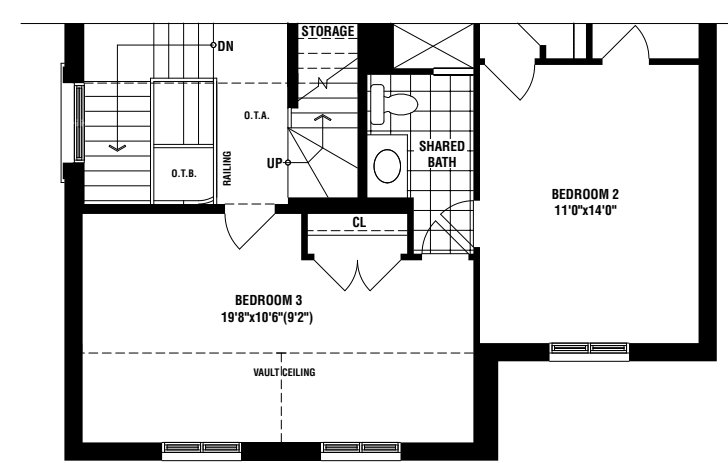
PART GROUND FLOOR
ELEV. 'B'



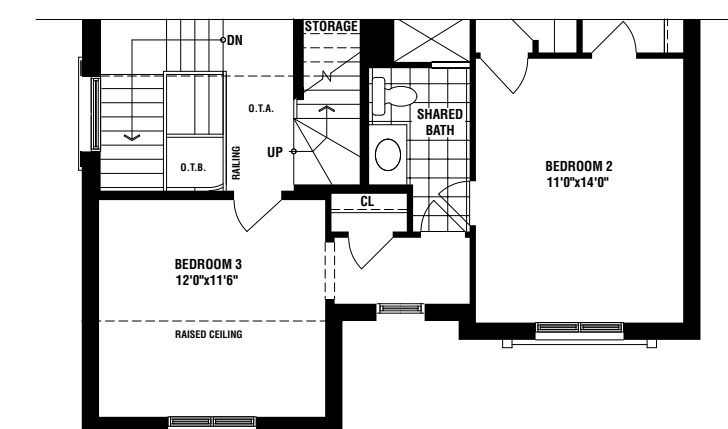
PART GROUND FLOOR
ELEV. 'C'



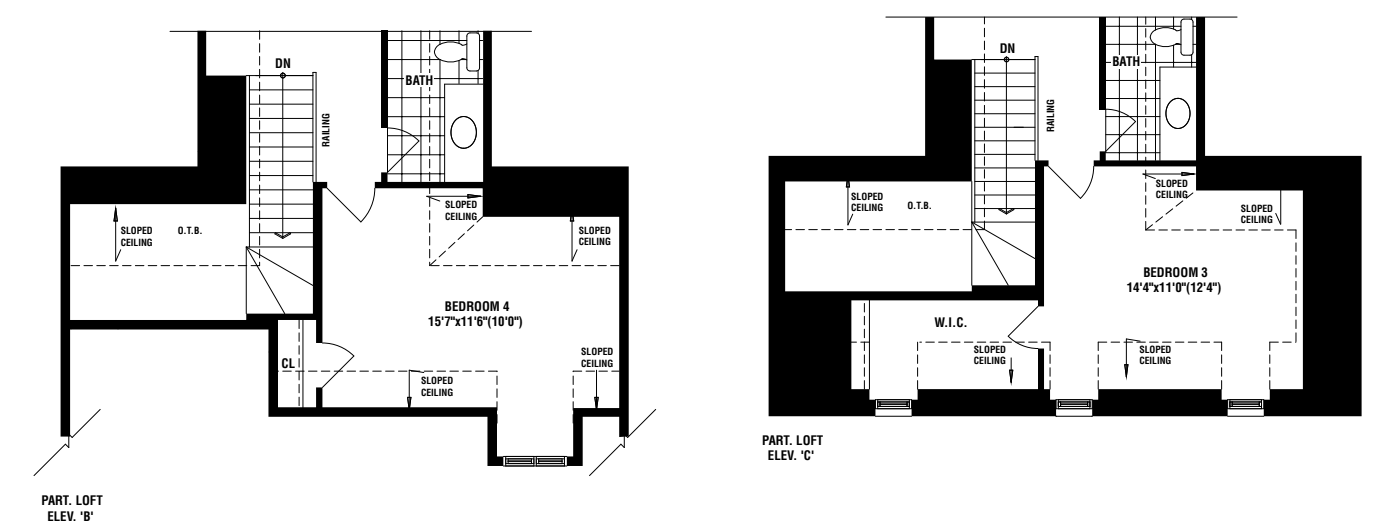
SECOND FLOOR
ELEV. 'A'



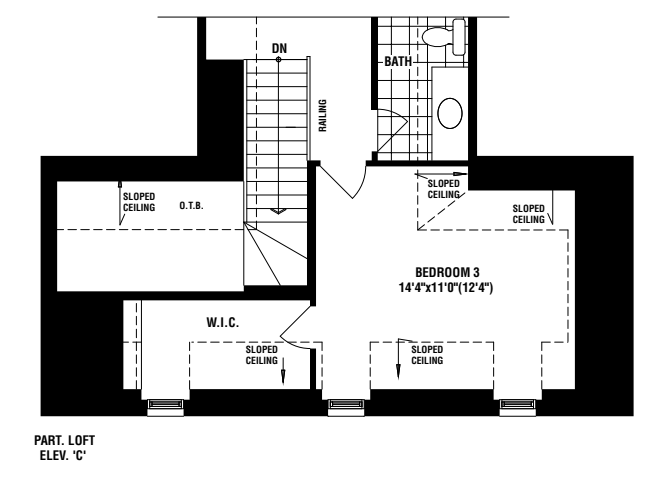
PART SECOND FLOOR
ELEV. 'B'



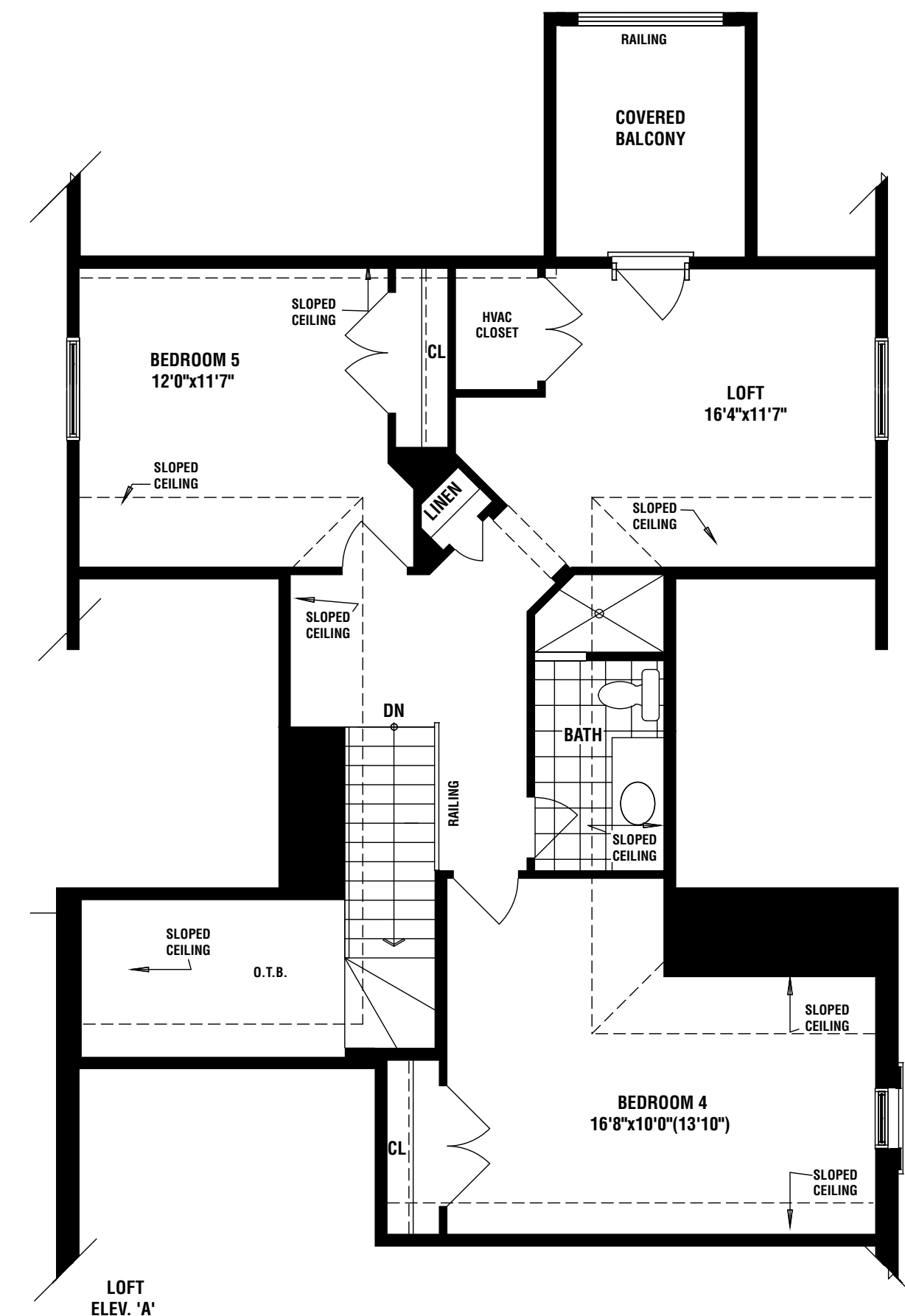
PART SECOND FLOOR
ELEV. 'C'



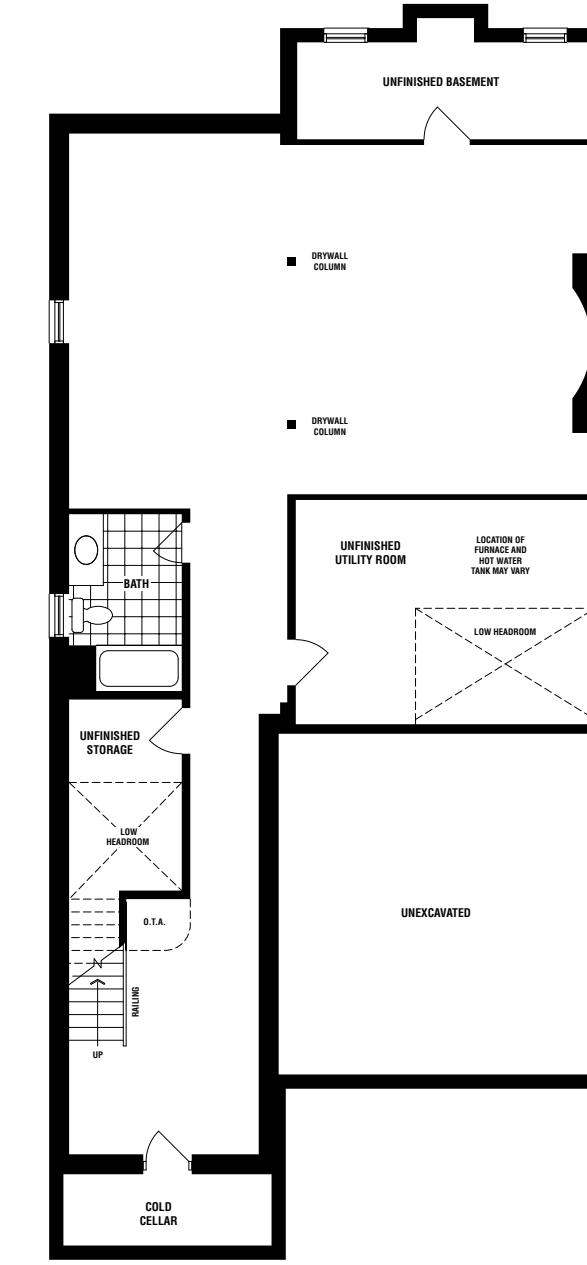
PART LOFT
ELEV. 'B'



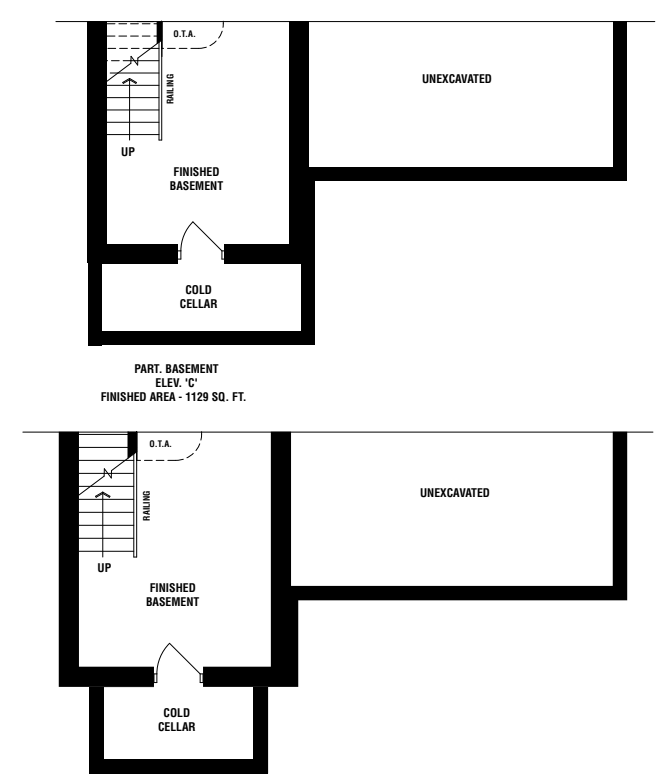
PART LOFT
ELEV. 'C'



LOFT
ELEV. 'A'



BASEMENT
ELEV. 'B'
FINISHED AREA - 1129 SQ. FT.



PART BASEMENT
ELEV. 'C'
FINISHED AREA - 1129 SQ. FT.

